



AIRCRAFT SPECIFICATIONS
2001 FALCON 2000

SERIAL NUMBER:	0139	HOURS TOTAL TIME:	10,579
REGISTRATION:	CS-DNS	LANDINGS:	7,153
ENGINES: CFE-738-1-1B MSP Gold	Left Engine: Serial Number P-105362 9,569.4 Hours Total Time 6,559 Cycles Since New 1,491.4 Hours Since CZI	Right Engine: Serial Number P-105486 8,882.2 Hours Total Time 6,116 Cycles Since New 462.6 Hours Since CZI	
APU: MSP	Garrett GTCP36 Serial Number P324	9,096 Hours Total Time	
FEATURES:	• Stand-by Compass	• Meggitt MKII Secondary Flight Display	
AVIONICS:	Communications: Autopilot: High-Frequency Communications: Navigation: Automatic Direction Finder: Distance Measuring Equipment: Transponders: Flight Data Recorder: Cockpit Voice Recorder: Weather Radar: Flight Management System: Global Positioning System: Traffic Collision: Digital Ground Proximity Warning System: Air Data Computer: Emergency Locator Transmitter: LASEREF: Radio Altimeter: Data Management Unit: Satellite Communications: Multi-Function Display: Data Base Unit:	Dual Collins VHF-422C Collins APS-4000 Dual Collins HF-9034A RX/TX Dual Collins VIR-432 Dual Collins ADF-462 Dual Collins DME-442 Dual Collins TDR-94D Mode S Honeywell Solid State (SSFDR) Honeywell Solid State (SSCVR) Collins RTA-858 Dual Collins FMC FMS-6100 Dual Collins GPS-4000 Collins TTR-4000 TCAS II w/Change 7 Honeywell Mark V w/Windshear Dual Collins ADC-850C ELT ADT 406AF Dual Honeywell Laseref IV Dual Collins ALT-55B Honeywell AFIS Thales JetSat Aero I SATCOM Dual Collins EFD-4077 DBU-5000	
INTERIOR:	Ten passenger configuration; forward four-chair club grouping; aft four-place conference grouping in Edelman RH55 Greige color leather with two-chair club opposite; forward L/H closet/entertainment cabinet; forward R/H closet/pantry and large galley with laccobucci Espresso Machine, hi-temp and micro-wave ovens; Stain Nickel plating; medium Birdseye maple cabinetry; aft forward lavatory; 134 cu. ft. pressurized baggage compartment with external access; Airshow 400; cabin video system with forward 15" bulkhead monitor and four 5.6" plug-in monitors; dual CD/DVD/entertainment system.		
EXTERIOR:	Matterhorn White base w/Slate Gray, Charcoal and Raspberry stripes.		

All NetJets Falcon 2000 aircraft have identical paint and interior, therefore the following photos represent Falcon 2000 s/n 0148.

Aircraft Sales, Brokerage, Acquisitions & Consulting



Aircraft offered subject to prior sale, inspection, verification of specifications and withdrawal from market. REV120315tmc



Aircraft Specifications - Falcon 2000, S/N 0139
Continued Page 2 of 7

2001 FALCON 2000



Aircraft offered subject to prior sale, inspection, verification of specifications and withdrawal from market. REV112315tmc



2001 FALCON 2000





2001 FALCON 2000





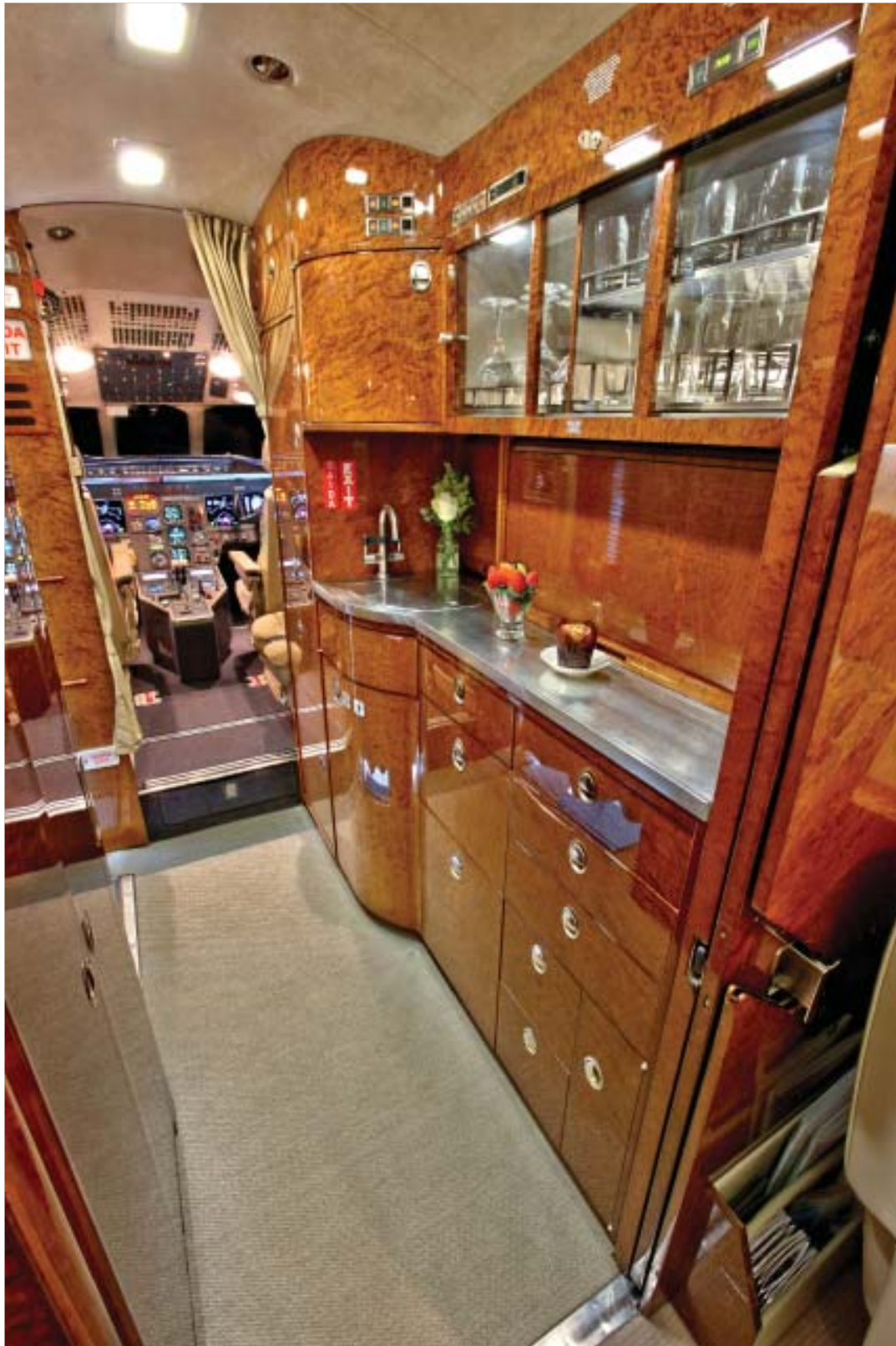
Aircraft Specifications - Falcon 2000, S/N 0139
Continued Page 5 of 7

2001 FALCON 2000





2001 FALCON 2000





2001 FALCON 2000

